

ERMCO

EUROPEAN READY MIXED CONCRETE ORGANIZATION
ASSOCIATION EUROPEENNE DU BETON PRET A L'EMPLOI
EUROPÄISCHER TRANSPORTBETONVERBAND

EUROPEAN READY-MIXED CONCRETE INDUSTRY STATISTICS

YEAR 2001

**EUROPEAN READY-MIXED CONCRETE INDUSTRY STATISTICS
YEAR 2001**

These statistics have been compiled for the year from Members' annual returns as of 05 Dec 2002.

CONTENTS

Tables 1a - 1b - 2a - 2b	Ready-mixed Concrete Industry Statistics
Table 3	Development of the Associated Companies
Table 4	Product Development
Table 5	Sector Development
Table 6	Delivery method and vehicles
	Statistical return from ERMCO Members as of 05 Dec 2002

December 2002

TABLE 1a
Ready Mixed Concrete Industry Statistics
Year 2001

Country	No. of plants			Total production <i>x10⁶ m³</i>			Prod. per plant <i>x10³ m³</i>			Production per capita <i>m³/capita</i>			Cem.consumption <i>x10⁶ t</i>			% cement to ready-mix			Av. cem dosage <i>kg/m³</i>		
	2000	2001	Change %	2000	2001	Change %	2000	2001	Change %	2000	2001	Change %	2000	2001	Change %	2000	2001	Change %	2000	2001	Change %
Austria	280	260	-7.1	9.3	7.3	-21.5	33.2	28.1	-15.5	1.15	0.90	-21.5	4.60	4.30	-6.5	52.0	53.0	1.9	260	260	0.0
Belgium	350	300	-14.3	11.8	10.9	-7.6	33.7	36.3	7.8	1.15	1.06	-7.6	6.00	5.70	-5.0	49.0	50.0	2.0	275	275	0.0
Czech Republic	-	-	-	-	-	-	-	-	-	-	-	-	-	-	-	<i>52.0</i>	-	-	-	-	-
Denmark	107	108	0.9	2.2	2.1	-4.5	20.6	19.4	-5.4	0.41	0.39	-4.5	1.50	1.50	0.0	35.0	35.0	0.0	230	230	0.0
Finland	200	200	0.0	2.5	2.6	4.0	12.5	13.0	4.0	0.48	0.50	4.0	1.70	1.70	0.0	49.0	51.0	4.1	350	350	0.0
France	1647	1626	-1.3	34.3	34.5	0.6	20.8	21.2	1.9	0.58	0.59	0.6	20.60	20.60	0.0	47.0	47.6	1.3	280	284	1.4
Germany	2334	2132	-8.7	57.9	51.1	-11.7	24.8	24.0	-3.4	0.71	0.62	-11.7	35.75	31.50	-11.9	47.1	46.4	-1.5	290	285	-1.7
Ireland	-	-	-	5.9	6.0	2.6	-	-	-	1.56	1.60	2.6	3.00	3.00	0.0	90.0	90.0	0.0	300	300	0.0
Italy	2430	2450	0.8	66.5	66.8	0.5	27.4	27.3	-0.4	1.15	1.15	0.5	38.00	39.80	4.7	46.0	44.5	-3.3	265	265	0.0
Netherlands (E)	180	180	0.0	8.5	8.5	0.0	47.2	47.2	0.0	0.53	0.53	0.0	6.25	5.88	-5.9	<i>47.0</i>	-	-	312	312	0.0
Norway	214	210	-1.9	2.3	2.2	-3.5	10.7	10.6	-1.6	0.52	0.50	-3.5	1.28	1.24	-3.3	62.4	58.8	-5.8	320	327	2.2
Poland	-	700	-	10.0	9.0	-10.0	-	12.9	-	0.26	0.23	-10.0	<i>14.29</i>	<i>12.00</i>	<i>-16.0</i>	-	24.0	-	-	330	-
Portugal	210	270	28.6	10.0	11.3	13.0	47.6	41.9	-12.1	0.97	1.10	13.0	11.10	11.30	1.8	24.0	26.0	8.3	280	280	0.0
Slovak Republic	100	100	0.0	1.9	1.9	0.0	18.6	18.6	0.0	0.34	0.34	0.0	1.63	1.63	0.0	40.0	40.0	0.0	340	350	2.9
Spain	1500	1500	0.0	64.0	71.1	11.1	42.7	47.4	11.1	1.57	1.74	11.1	38.50	<i>42.00</i>	9.1	42.0	48.0	14.3	250	283	13.2
Sweden	212	212	0.0	2.4	2.6	8.3	11.3	12.3	8.3	0.27	0.29	8.3	1.50	1.60	6.7	55.0	55.0	0.0	340	340	0.0
Switzerland	259	251	-3.1	10.5	10.9	3.6	40.6	43.4	6.9	1.42	1.47	3.6	3.93	3.93	0.0	72.3	71.4	-1.2	287	287	0.0
Turkey	368	401	9.0	27.0	25.4	-5.9	73.4	63.3	-13.7	0.39	0.37	-5.9	31.00	25.00	-19.4	31.0	32.0	3.2	290	280	-3.4
Un.Kingdom (E)	1250	1250	0.0	23.0	23.0	0.0	18.4	18.4	0.0	0.39	0.39	0.0	12.00	<i>12.50</i>	4.2	60.0	60.0	0.0	280	280	0.0
Total/Average	11641	12150	4.4	350.0	347.2	-0.8	30.1	28.6	-4.9	0.79	0.78	-0.8	232.63	225.18	-3.2	41.7	43.5	4.2	267.9	282.3	5.4
Cuba	43	42	-2.3	0.3	0.3	-12.5	8.0	7.1	-10.5	0.05	0.05	-12.5	0.19	0.22	17.6	35.0	40.0	14.3	300	300	0.0
Israel	221	228	3.2	8.7	7.9	-9.2	39.4	34.6	-12.0	0.06	0.05	-9.2	5.20	3.90	-25.0	52.0	58.0	11.5	300	280	-6.7
Russia (E)	1200	1200	0.0	35.0	35.0	0.0	29.2	29.2	0.0	3.01	3.01	0.0	32.00	32.00	0.0	20.0	20.0	0.0	360	360	0.0
USA	-	5000	-	-	315.0	-	-	63.0	-	-	1.11	-	-	113.00	-	-	74.0	-	-	300	-

Legend: *Data in italics* - Source: Cembureau
E = Estimated data

Table 1b
Ready Mixed Concrete Industry Statistics
Year 2001

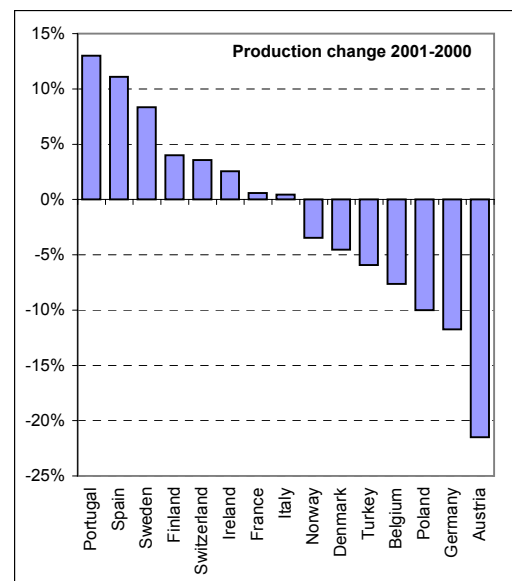
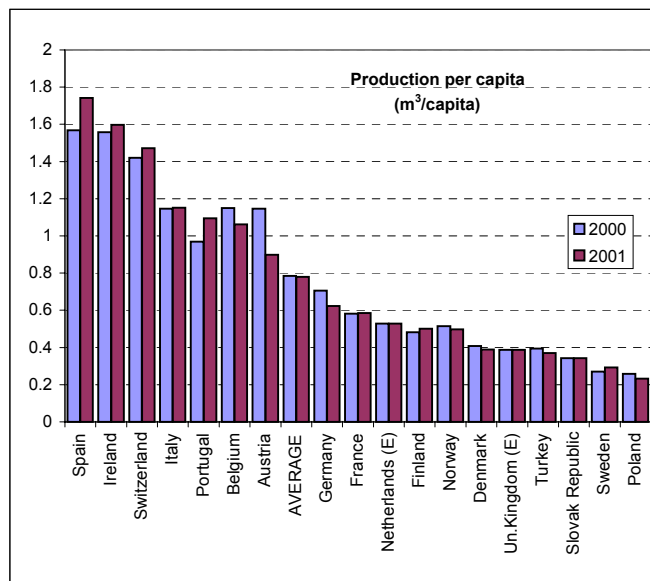
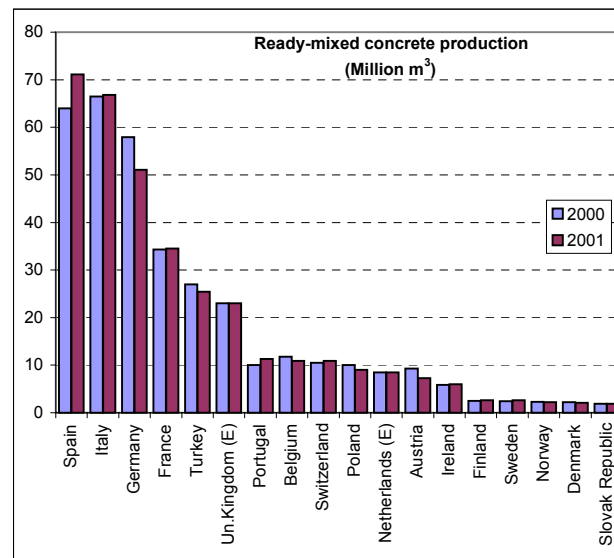
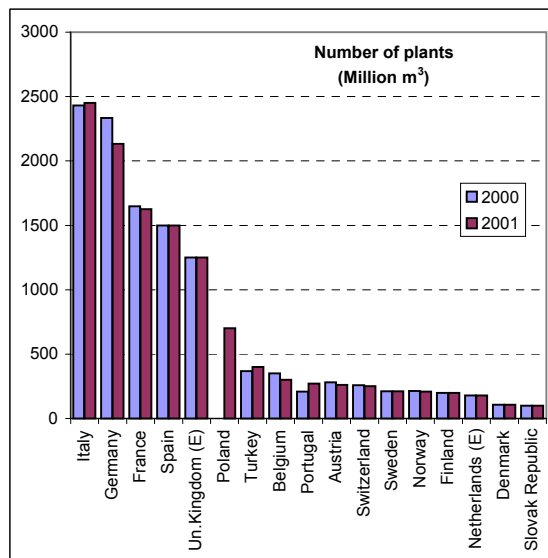


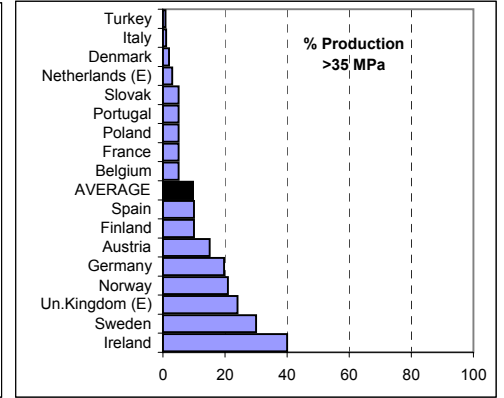
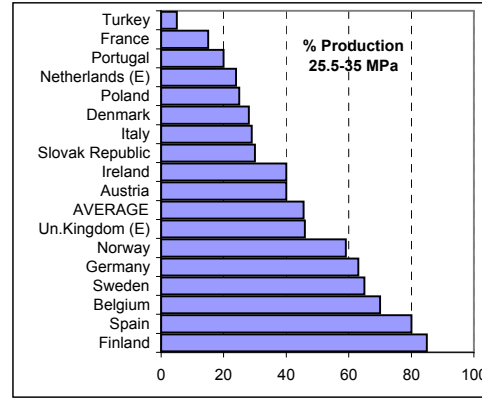
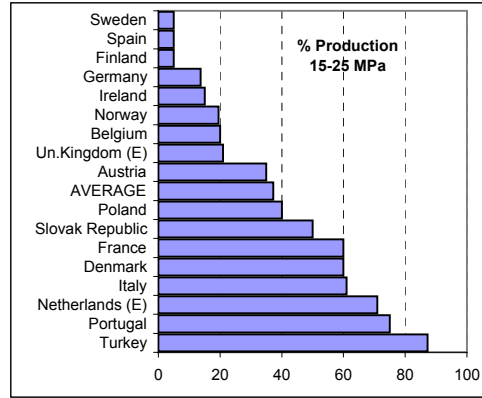
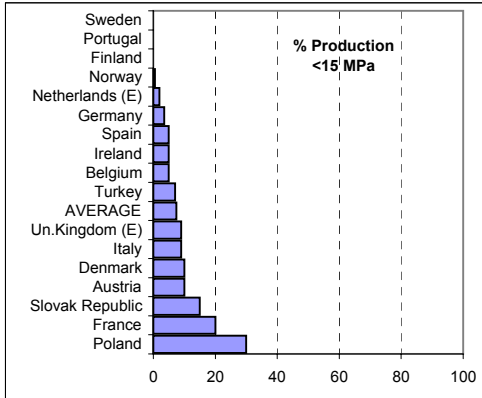
TABLE 2a
Ready Mixed Concrete Industry Statistics
Year 2001

Country	% Production per strength class								% Production per consistence class					
	Strength (Mpa)								Slump class					
	<15		15-25		25.5-35		>35		S1		S2-S3		S4-S5+	
	2000	2001	2000	2001	2000	2001	2000	2001	2000	2001	2000	2001	2000	2001
Austria	10	10	35	35	40	40	15	15	5	5	45	45	50	50
Belgium	5	5	20	20	70	70	5	5	5	5	80	75	15	20
Czech Republic	-	-	-	-	-	-	-	-	-	-	-	-	-	-
Denmark	10	10	60	60	28	28	2	2	5	5	15	15	75	80
Finland	0	0	5	5	85	85	10	10	5	5	25	25	70	70
France	-	20	60	60	-	15	-	5	-	-	80	80	-	-
Germany	4	4	13	14	63	63	20	20	12	12	84	83	4	5
Ireland	5	5	15	15	40	40	40	40	15	15	65	65	20	20
Italy	9	9	61	61	29	29	1	1	-	-	-	-	-	-
Netherlands (E)	2	2	71	71	24	24	3	3	-	-	-	-	-	-
Norway	0	1	23	20	54	59	23	21	-	1	-	0	-	99
Poland	-	30	-	40	-	25	-	5	-	10	-	20	-	70
Portugal	0	0	80	75	15	20	5	5	0	0	95	95	5	5
Slovak Republic	15	15	50	50	30	30	5	5	10	10	80	80	10	10
Spain	5	5	5	5	80	80	10	10	0	0	80	80	20	20
Sweden	0	0	5	5	63	65	32	30	3	3	57	57	40	40
Switzerland	-	-	-	-	-	-	-	-	-	-	-	-	-	-
Turkey	12	7	85	87	3	5	1	1	1	1	34	34	65	65
Un.Kingdom (E)	9	9	21	21	46	46	24	24	3	3	96	96	1	1
Total/Average		7		37		46		10		4		76		23
Cuba	3	2	61	58	36	38	0	2	0	0	26	25	74	75
Israel	5	3	20	15	60	57	15	25	1	1	4	4	95	95
Russia (E)	10	10	70	70	15	15	5	5	5	5	90	90	5	5
USA	-	10	-	50	-	30	-	10	-	-	-	-	-	-

Legend: E = Estimated data

TABLE 2b
Ready Mixed Concrete Industry Statistics
Year 2001

Distribution of production by strength class



Distribution of production by consistence class

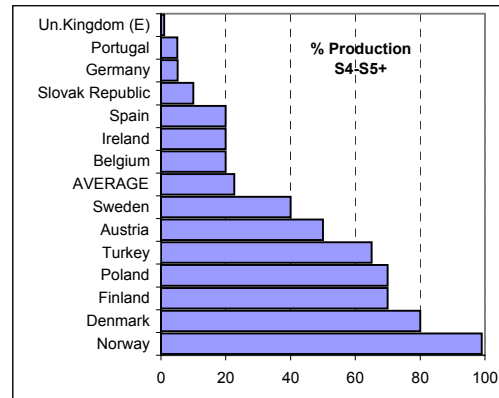
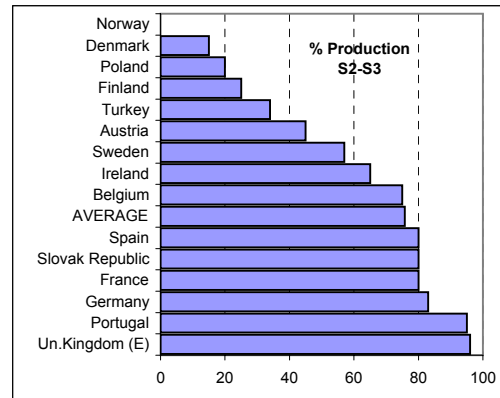
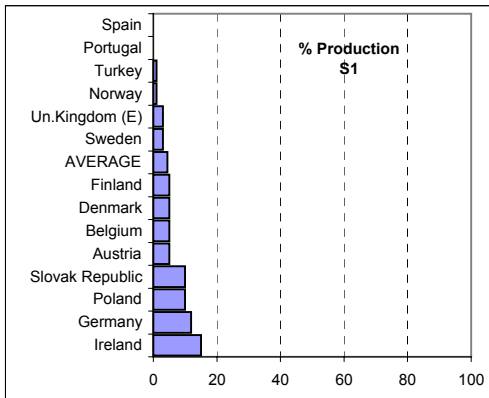


TABLE 3
European Ready Mixed Concrete Organization
Development of the Associated Companies 2001/2000

Country	Producers			Plants			Employees				
	2000	2001	Change % 2001-00	2000	2001	Change % 2001-00	Members		Change % 2001-00	Country 2001	% Member/Country 2001
							2000	2001			
Austria	119	125	5.0	233	222	-4.7	2064	1814	-12.1	2100	86.4
Belgium	35	35	0.0	105	105	0.0	2000	1780	-11.0	3560	50.0
Czech Republic	-	-	-	-	-	-	-	-	-	-	-
Denmark	16	16	0.0	74	74	0.0	-	-	-	-	-
Finland	36	36	0.0	96	96	0.0	750	750	0.0	850	88.2
France	186	189	1.6	1175	1140	-3.0	4976	5460	9.7	7000	78.0
Germany	599	581	-3.0	1345	1368	1.7	8721	8412	-3.5	13000	64.7
Ireland	100	100	0.0	200	220	10.0	10000	10000	0.0	-	-
Italy	260	296	13.8	965	1027	6.4	9500	10800	13.7	19000	56.8
Netherlands (E)	85	85	0.0	143	143	0.0	2150	2150	0.0	2500	86.0
Norway	80	80	0.0	149	154	3.4	990	934	-5.7	1250	74.7
Poland	-	29	-	-	170	-	-	1200	-	3500	34.3
Portugal	18	25	38.9	125	155	24.0	1200	1100	-8.3	1300	84.6
Slovak Republic	11	11	0.0	28	34	21.4	262	304	16.0	900	33.8
Spain	333	364	9.3	1216	1300	6.9	10400	12400	19.2	15000	82.7
Sweden	36	36	0.0	208	208	0.0	1000	1000	0.0	1020	98.0
Switzerland	153	147	-3.9	235	229	-2.6	-	-	-	-	-
Turkey	67	69	3.0	247	253	2.4	7805	7191	-7.9	10720	67.1
Un.Kingdom (E)	24	24	0.0	1040	1040	0.0	10000	10000	0.0	10500	95.2
Total	2158	2248	4.2	7584	7938	4.7	71818	75295	4.84	92200	81.7
Cuba	1	1	0.0	5	6	20.0	480	345	-28.1	1100	31.4
Israel	18	17	-5.6	189	182	-3.7	1000	800	-20.0	1100	72.7
Russia (E)	-	-	-	-	-	-	-	-	-	50000	-
USA	-	800	-	-	3000	-	-	60000	-	100000	60.0

Legend: E = Estimated data

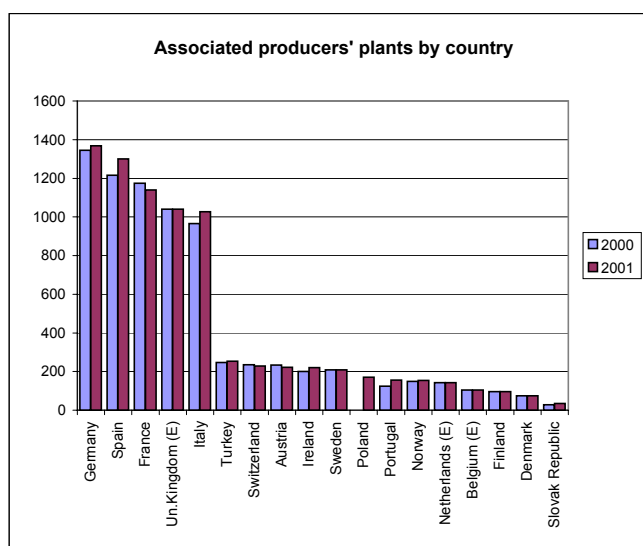
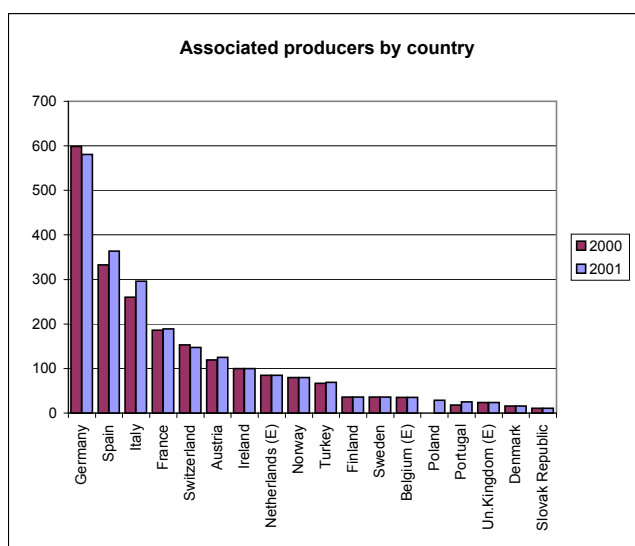


TABLE 4
European Ready Mixed Concrete Organization
Product development 2001/2000

Country	Production $\times 10^6 m^3$			Method of Production % of total				Pumped Concrete % of total		Turnover including delivery, excluding tax - $\times 10^6 \text{ €}$			Average production per plant - $\times 10^3 m^3$		
	2000	2001	Change %	Static Mixing		Dry Batching		2000	2001	2000	2001	Change %	2000	2001	Change %
				2000	2001	2000	2001								
Austria	8.80	7.00	-20.5	100	100	0	0	43	43	501	392	-21.9	37.8	31.5	-16.5
Belgium	6.50	6.00	-7.7	100	100	0	0	35	30	340	303	-11.0	61.9	57.1	-7.7
Czech Republic	-	-	-	-	-	-	-	-	-	-	-	-	-	-	-
Denmark	1.91	1.85	-3.1	100	100	0	0	20	25	-	-	-	25.8	25.0	-3.1
Finland	2.04	2.10	2.9	100	100	0	0	70	70	154	163	5.8	21.3	21.9	2.9
France	26.80	25.90	-3.4	100	100	0	0	12	12	1970	2028	2.9	22.8	22.7	-0.4
Germany	37.50	33.80	-9.9	100	100	0	0	40	40	2428	2132	-12.2	27.9	24.7	-11.4
Ireland	4.88	5.50	12.7	100	100	0	0	20	20	333	350	5.1	24.4	25.0	2.5
Italy	30.00	33.00	10.0	8	8	92	92	40	42	1660	1910	15.1	31.1	32.1	3.4
Netherlands (E)	7.60	7.60	0.0	98	98	2	2	-	-	510	510	0.0	53.1	53.1	0.0
Norway	1.97	1.96	-0.5	99	98	1	2	45	45	218	245	12.2	13.2	12.7	-3.7
Poland	-	3.60	-	-	98.3	-	1.7	-	35	-	180	-	-	21.2	-
Portugal	7.80	9.30	19.2	85	85	15	15	55	55	450	500	11.1	62.4	60.0	-3.8
Slovak Republic	0.70	0.69	-2.1	100	100	0	0	15	16	24	29	18.1	25.1	20.2	-19.4
Spain	46.28	52.30	13.0	30	30	70	70	12	15	1947	2200	13.0	38.1	40.2	5.7
Sweden	2.30	2.40	4.3	100	100	0	0	45	45	200	220	10.0	11.1	11.5	4.3
Switzerland	9.36	9.89	5.7	100	100	0	0	18.5	20.8	-	-	-	39.8	43.2	8.4
Turkey	21.00	18.00	-14.3	75	75.5	25	24.5	80	75.5	734	474	-35.5	85.0	71.1	-16.3
Un.Kingdom (E)	22.52	22.52	0.0	25	25	75	75	5	5	1802	1802	0.0	21.7	21.7	0.0
Total/Average	237.96	243.41	2.3	64.9	63.1	35.1	36.9	29.7	29.4	13272	13437	1.2	31.4	30.7	-2.3
Cuba	0.16	0.13	-16.6	0	0	100	100	10	15	20	1	-95.6	31.4	21.8	-30.5
Israel	6.90	6.30	-8.7	2.6	2.6	97.4	97.4	50	55	325	262	-19.4	36.5	34.6	-5.2
Russia (E)	-	-	-	-	-	-	-	15	15	-	-	-	-	-	-
USA	-	205.00	-	-	20	-	80	-	30	-	20000	-	-	68.3	-

Legend: E = Estimated data

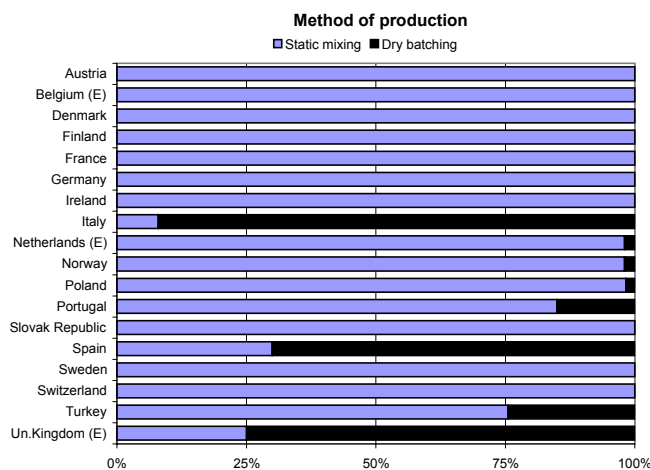
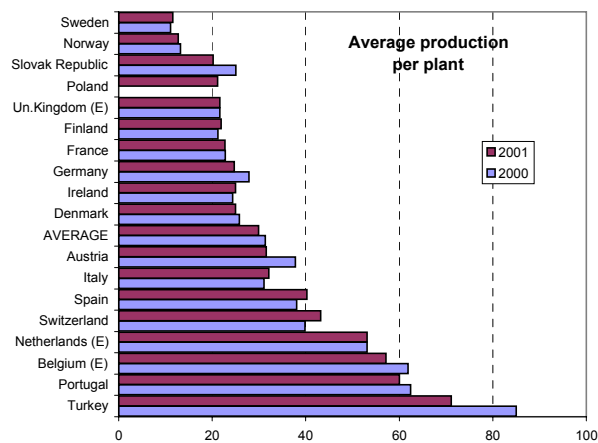
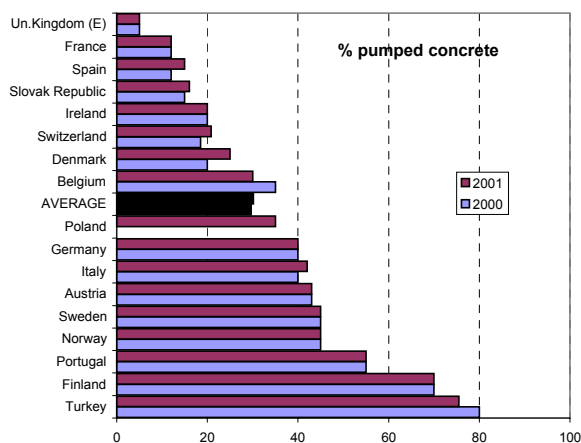


TABLE 5
European Ready Mixed Concrete Organization
Sector development 2001/2000

Country	Turnover including delivery, excluding tax - x 10 ⁶ €			Turnover / production € / m ³			Turnover / employees x10 ³ € / employee		
	2000	2001	Change %	2000	2001	Change %	2000	2001	Change %
Austria	501	392	-21.9	57.0	55.9	-1.8	242.9	215.8	-11.2
Belgium	340	303	-11.0	52.3	50.4	-3.6	170.0	170.0	0.0
Czech Republic	-	-	-	-	-	-	-	-	-
Denmark	-	-	-	-	-	-	-	-	-
Finland	154	163	5.8	75.5	77.6	2.8	205.3	217.3	5.8
France	1970	2028	2.9	73.5	78.3	6.5	395.9	371.4	-6.2
Germany	2428	2132	-12.2	64.7	63.1	-2.6	278.4	253.4	-9.0
Ireland	333	350	5.1	68.2	63.6	-6.7	33.3	35.0	5.1
Italy	1660	1910	15.1	55.3	57.9	4.6	174.7	176.9	1.2
Netherlands (E)	510	510	0.0	67.1	67.1	0.0	237.2	237.2	0.0
Norway	218	245	12.2	110.8	125.0	12.8	220.5	262.3	19.0
Poland	-	180	-	-	50.0	-	-	150.0	-
Portugal	450	500	11.1	57.7	53.8	-6.8	375.0	454.5	21.2
Slovak Republic	24	29	18.1	34.6	41.8	20.7	92.7	94.4	1.8
Spain	1947	2200	13.0	42.1	42.1	0.0	187.2	177.4	-5.2
Sweden	200	220	10.0	87.0	91.7	5.4	200.0	220.0	10.0
Switzerland	-	-	-	-	-	-	-	-	-
Turkey	734	474	-35.5	35.0	26.3	-24.7	94.0	65.9	-30.0
Un.Kingdom (E)	1802	1802	0.0	80.0	80.0	0.0	180.2	180.2	0.0
Total/Average	13272	13437	1.2	55.8	55.2	-1.0	184.8	178.5	-3.4
Cuba	20	1	-95.6	127.4	6.7	-94.7	41.7	2.6	-93.9
Israel	325	262	-19.4	47.1	41.6	-11.7	325.0	327.5	0.8
Russia (E)	-	-	-	-	-	-	-	-	-
USA	-	20000	-	-	97.6	-	-	333.3	-

Legend: E = Estimated data

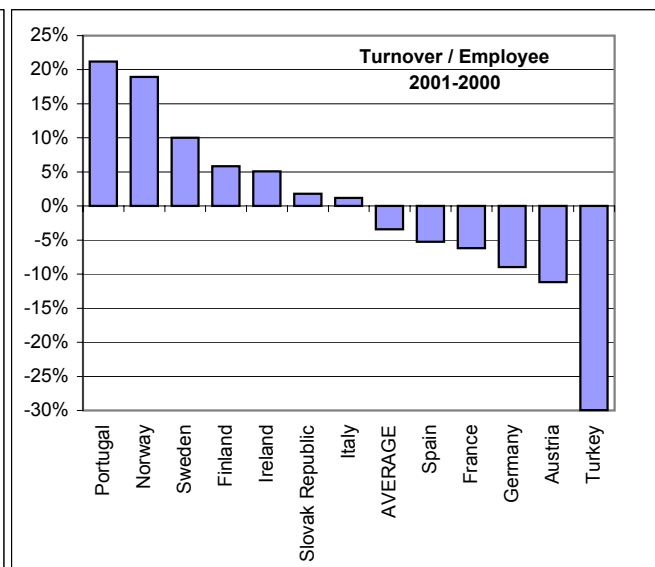
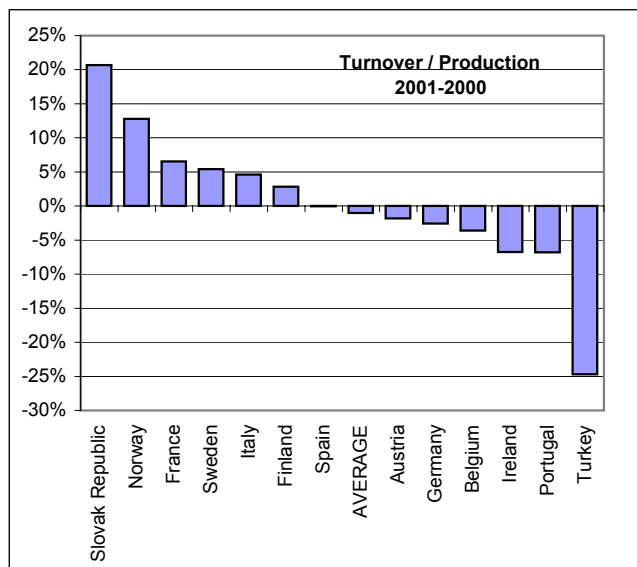


TABLE 6
European Ready-Mixed Concrete Organization
Delivery method and vehicles 2001

Country	Number of vehicles		Vehicles by capacity			Delivery method		
	2001	2000	%			Company vehicles	Outside Contractors	Customer Collection
			<6 m ³	6-8 m ³	>8 m ³			
Austria	1495	1750	46	46	8	52	38	10
Belgium	-	1400	0	70	30	60	15	25
Czech Republic	-	-	-	-	-	-	-	-
Denmark	-	-	30	68	2	98	0	2
Finland	-	-	10	85	5	30	65	5
France	6000	6000	70	27	3	13	75	12
Germany	12189	12925	26	68	6	-	-	-
Ireland	650	600	5	20	75	30	65	5
Italy	11300	11236	-	-	-	46	52	2
Netherlands (E)	1200	1200	1	35	64	89	9	2
Norway	0	690	2	96	2	39	60	1
Poland	2500	-	50	35	15	45	45	10
Portugal	1650	1600	0	60	40	20	75	5
Slovak Republic	300	300	92	4	4	62	21	17
Spain	-	-	90	5	5	40	60	0
Sweden	600	600	45	55	0	20	80	0
Switzerland	-	-	28	67	5	-	-	-
Turkey	2856	2778	0	88	12	68	31	1
Un.Kingdom (E)	6000	6000	5	95	0	14	82	4
Total/Average	46740	47079	29	61	11	36	58	5
Cuba	160	200	12	48	40	70	30	0
Israel	-	1550	0	55	45	25	75	0
Russia (E)	2000	2000	87	10	3	5	80	15
USA	70000	-	5	80	15	94	5	1

Legend: E = Estimated data

Country	AUSTRIA
---------	---------

		Y 2000	Y 2001	Comments (*)
A	Total number of ready-mixed concrete producers			
A1	Country	150	150	
A2	Members	119	125	
B	Total number of employees/workers			
B1	Country	2400	2100	
B2	Members	2064	1814	
C	Turnover including transport – (millions of €)			
C1	Country	570	450	
C2	Members	501.4	391.5	
D	Total ready-mixed concrete production (millions of m³)			
D1	Country	9.3	7.3	
D2	Members	8.8	7	
E	Plants			
E1	Total number of plants - Country	280	260	
E11	% of static mixing plants	100%	100%	
E12	% of dry batching plants	0%	0%	
E2	Total number of plants - Members	233	222	
E21	% of static mixing plants	100%	100%	
E22	% of dry batching plants	0%	0%	
Data F to I refer to total concrete production in Austria				
F	Concrete			
F1	Total production including site-mixed and precast (millions of m ³)	14	10.1	
F2	% of ready-mixed concrete	66%	66%	
F3	% of site-mixed concrete	10%	10%	
F4	% of precast concrete	24%	24%	
G	Cement			
G1	Total cement consumption (millions of tons)	4.6	4.3	
G2	% to ready-mixed concrete	52%	53%	
G3	% to site-mixed concrete	9%	14%	
G4	% to precast concrete	24%	20%	
G5	% to other uses (mortar, repair, restoration, etc)	15%	13%	
G6	Average Dosage in ready-mixed concrete (kg/m ³)	260	260	
H	Addition			
H1	Most commonly used addition			
H2	Total consumption of addition I (millions of tons)	0.07	0.065	
H3	Average dosage in ready-mixed concrete (kg/m ³)	0.007	1.3	0,5 % cement
On total ready-mixed concrete production:				
I	Type/dimension of specimen for strength tests	Cube 15x15x15		
J	% per strength class			
	strength (N/mm ²)			
J1	<=15	10%	10%	
J2	>15 <=25	35%	35%	
J3	>25 <= 35	40%	40%	
J4	>35	15%	15%	
K	Preferred method for measurement of consistence	Slump/flow		
L	% per consistence class			
L1	S1	5%	5%	
L2	S2 - S3	45%	45%	
L3	S4 - S5+	50%	50%	
M	Delivery method			
M1	% Company vehicles	52%	52%	
M2	% Outside contractors	38%	38%	
M3	% Customer collection	10%	10%	
N	Truck, Mixer, Pumps			
N1	Total number of truck mixers / delivery vehicles	1750	1495	
N2	% under 6 m ³	46%	46%	
N3	% 6-8 m ³	46%	46%	
N4	% over 8 m ³	8%	8%	
N5	% pumped concrete on total ready-mixed concrete	43%	43%	
N6	Total number of pumps	600	500	

(*) E = Estimated value

Country	BELGIUM
---------	---------

		Y 2000	Y 2001	Comments (*)
A	Total number of ready-mixed concrete producers			
A1	Country	200	178	
A2	Members	35	35	E
B	Total number of employees/workers			
B1	Country	4000	3560	E
B2	Members	2000	1780	E
C	Turnover including transport – (millions of €)			
C1	Country	600	534	E
C2	Members	340	303	E
D	Total ready-mixed concrete production (millions of m³)			
D1	Country	11.8	10.9	
D2	Members	6.5	6	E
E	Plants			
E1	Total number of plants - Country	350	300	
E11	% of static mixing plants	99%	99%	
E12	% of dry batching plants	1%	1%	
E2	Total number of plants - Members	105	105	E
E21	% of static mixing plants	100%	100%	E
E22	% of dry batching plants	0%	0%	E
Data F to I refer to total concrete production in Belgium				
F	Concrete			
F1	Total production including site-mixed and precast (millions of m ³)	18	16.5	
F2	% of ready-mixed concrete	59%	61%	
F3	% of site-mixed concrete	7%	6%	
F4	% of precast concrete	34%	33%	
G	Cement			
G1	Total cement consumption (millions of tons)	6	5.7	
G2	% to ready-mixed concrete	49%	50%	
G3	% to site-mixed concrete	6%	5%	
G4	% to precast concrete	26%	27%	
G5	% to other uses (mortar, repair, restoration, etc)	19%	18%	
G6	Average Dosage in ready-mixed concrete (kg/m ³)	275	275	
H	Addition			
H1	Most commonly used addition		FA - Fly Ash	
H2	Total consumption of addition I (millions of tons)	0.4	0.15	
H3	Average dosage in ready-mixed concrete (kg/m ³)	30	14	
On total ready-mixed concrete production:				
I	Type/dimension of specimen for strength tests	-		
J	% per strength class			
	strength (N/mm ²)			
J1	<=15	5%	5%	
J2	>15 <=25	20%	20%	
J3	>25 <= 35	70%	70%	
J4	>35	5%	5%	
K	Preferred method for measurement of consistence	Slump	Slump (S)	
L	% per consistence class			
L1	S1	5%	5%	
L2	S2 - S3	80%	75%	
L3	S4 - S5+	15%	20%	
M	Delivery method			
M1	% Company vehicles	60%	60%	
M2	% Outside contractors	15%	15%	
M3	% Customer collection	25%	25%	
N	Truck, Mixer, Pumps			
N1	Total number of truck mixers / delivery vehicles	1400	-	
N2	% under 6 m ³	0%	0%	
N3	% 6-8 m ³	75%	70%	
N4	% over 8 m ³	25%	30%	
N5	% pumped concrete on total ready-mixed concrete	35%	30%	
N6	Total number of pumps	150	150	

(*) E = Estimated value

Country	CZECH REPUBLIC
---------	-----------------------

		Y 2000	Y 2001	Comments (*)
A	Total number of ready-mixed concrete producers			
A1	Country	-	-	
A2	Members	-	-	
B	Total number of employees/workers			
B1	Country	-	-	
B2	Members	-	-	
C	Turnover including transport – (millions of €)			
C1	Country	-	-	
C2	Members	-	-	
D	Total ready-mixed concrete production (millions of m³)			
D1	Country	-	-	
D2	Members	-	-	
E	Plants			
E1	Total number of plants - Country	-	-	
E11	% of static mixing plants	- %	- %	
E12	% of dry batching plants	- %	- %	
E2	Total number of plants - Members	-	-	
E21	% of static mixing plants	- %	- %	
E22	% of dry batching plants	- %	- %	
Data F to I refer to total concrete production in Czech Republic				
F	Concrete			
F1	Total production including site-mixed and precast (millions of m ³)	-	-	
F2	% of ready-mixed concrete	- %	- %	
F3	% of site-mixed concrete	- %	- %	
F4	% of precast concrete	- %	- %	
G	Cement			
G1	Total cement consumption (millions of tons)	-	-	
G2	% to ready-mixed concrete	52 %	- %	
G3	% to site-mixed concrete	- %	- %	
G4	% to precast concrete	21 %	- %	
G5	% to other uses (mortar, repair, restoration, etc)	27 %	- %	
G6	Average Dosage in ready-mixed concrete (kg/m ³)	-	-	
H	Addition			
H1	Most commonly used addition	-	-	
H2	Total consumption of addition I (millions of tons)	-	-	
H3	Average dosage in ready-mixed concrete (kg/m ³)	-	-	
On total ready-mixed concrete production:				
I	Type/dimension of specimen for strength tests	-	-	
J	% per strength class			
	strength (N/mm ²)			
J1	<=15	- %	- %	
J2	>15 <=25	- %	- %	
J3	>25 <= 35	- %	- %	
J4	>35	- %	- %	
K	Preferred method for measurement of consistence	-	-	
L	% per consistence class			
L1	S1	- %	- %	
L2	S2 - S3	- %	- %	
L3	S4 - S5+	- %	- %	
M	Delivery method			
M1	% Company vehicles	- %	- %	
M2	% Outside contractors	- %	- %	
M3	% Customer collection	- %	- %	
N	Truck, Mixer, Pumps			
N1	Total number of truck mixers / delivery vehicles	-	-	
N2	% under 6 m ³	- %	- %	
N3	% 6-8 m ³	- %	- %	
N4	% over 8 m ³	- %	- %	
N5	% pumped concrete on total ready-mixed concrete	- %	- %	
N6	Total number of pumps	-	-	

(*) Specify if estimated value.

Country	DENMARK
---------	---------

		Y 2000	Y 2001	Comments (*)
A	Total number of ready-mixed concrete producers			
A1	Country	40	40	
A2	Members	16	16	
B	Total number of employees/workers			
B1	Country	-	-	
B2	Members	-	-	
C	Turnover including transport – (millions of €)			
C1	Country	-	-	
C2	Members	-	-	
D	Total ready-mixed concrete production (millions of m³)			
D1	Country	2.2	2.1	E
D2	Members	1.91	1.85	
E	Plants			
E1	Total number of plants - Country	107	108	
E11	% of static mixing plants	100%	100%	E
E12	% of dry batching plants	0%	0%	E
E2	Total number of plants - Members	74	74	E
E21	% of static mixing plants	100%	100%	E
E22	% of dry batching plants	0%	0%	E
Data F to I refer to total concrete production in Denmark				
F	Concrete			
F1	Total production including site-mixed and precast (millions of m ³)	-	-	
F2	% of ready-mixed concrete	-%	-%	
F3	% of site-mixed concrete	-%	-%	
F4	% of precast concrete	-%	-%	
G	Cement			
G1	Total cement consumption (millions of tons)	1.5	1.5	
G2	% to ready-mixed concrete	35%	35%	E
G3	% to site-mixed concrete	0%	0%	E
G4	% to precast concrete	45%	45%	E
G5	% to other uses (mortar, repair, restoration, etc)	20%	20%	E
G6	Average Dosage in ready-mixed concrete (kg/m ³)	230	230	E
H	Addition			
H1	Most commonly used addition	-	-	
H2	Total consumption of addition I (millions of tons)	-	-	
H3	Average dosage in ready-mixed concrete (kg/m ³)	-	-	
On total ready-mixed concrete production:				
I	Type/dimension of specimen for strength tests	Cyl 15x30	Cyl 15x30	
J	% per strength class			
	strength (N/mm ²)			
J1	<=15	10%	10%	E
J2	>15 <=25	60%	60%	E
J3	>25 <= 35	28%	28%	E
J4	>35	2%	2%	E
K	Preferred method for measurement of consistence			
L	% per consistence class			
L1	S1	5%	5%	E
L2	S2 - S3	15%	15%	E
L3	S4 - S5+	75%	80%	E; 15%SCC
M	Delivery method			
M1	% Company vehicles	98%	98%	E
M2	% Outside contractors	0%	0%	E
M3	% Customer collection	2%	2%	E
N	Truck, Mixer, Pumps			
N1	Total number of truck mixers / delivery vehicles	-	-	
N2	% under 6 m ³	30%	30%	E
N3	% 6-8 m ³	68%	68%	E
N4	% over 8 m ³	2%	2%	E
N5	% pumped concrete on total ready-mixed concrete	20%	25%	E
N6	Total number of pumps	-	-	

(*) E = Estimated value

Country	FINLAND
---------	----------------

		Y 2000	Y 2001	Comments (*)
A	Total number of ready-mixed concrete producers			
A1	Country	100	100	E
A2	Members	36	36	
B	Total number of employees/workers			
B1	Country	850	850	E
B2	Members	750	750	E
C	Turnover including transport – (millions of €)			
C1	Country	190	195	E
C2	Members	154	163	
D	Total ready-mixed concrete production (millions of m³)			
D1	Country	2.5	2.6	E
D2	Members	2.04	2.1	
E	Plants			
E1	Total number of plants - Country	200	200	E
E11	% of static mixing plants	100%	100%	E
E12	% of dry batching plants	0%	0%	E
E2	Total number of plants - Members	96	96	
E21	% of static mixing plants	100%	100%	E
E22	% of dry batching plants	0%	0%	E
Data F to I refer to total concrete production in Finland				
F	Concrete			
F1	Total production including site-mixed and precast (millions of m ³)		3.8	
F2	% of ready-mixed concrete	66%	68%	E
F3	% of site-mixed concrete	6%	6%	E
F4	% of precast concrete	28%	26%	E
G	Cement			
G1	Total cement consumption (millions of tons)	1.7	1.7	
G2	% to ready-mixed concrete	49%	51%	E
G3	% to site-mixed concrete	4%	4%	E
G4	% to precast concrete	19%	17%	E
G5	% to other uses (mortar, repair, restoration, etc)	28%	28%	E
G6	Average Dosage in ready-mixed concrete (kg/m ³)	350	350	E
H	Addition			
H1	Most commonly used addition			
H2	Total consumption of addition I (millions of tons)	0.1	0.1	E
H3	Average dosage in ready-mixed concrete (kg/m ³)	80	80	E
On total ready-mixed concrete production:				
I	Type/dimension of specimen for strength tests	-		
J	% per strength class			
	strength (N/mm ²)			
J1	<=15	0%	0%	E
J2	>15 <=25	5%	5%	E
J3	>25 <= 35	85%	85%	E
J4	>35	10%	10%	E
K	Preferred method for measurement of consistence	Slump		
L	% per consistence class			
L1	S1	5%	5%	E
L2	S2 - S3	25%	25%	E
L3	S4 - S5+	70%	70%	E
M	Delivery method			
M1	% Company vehicles	30%	30%	E
M2	% Outside contractors	65%	65%	E
M3	% Customer collection	5%	5%	E
N	Truck, Mixer, Pumps			
N1	Total number of truck mixers / delivery vehicles	-	-	
N2	% under 6 m ³	10%	10%	E
N3	% 6-8 m ³	85%	85%	E
N4	% over 8 m ³	5%	5%	E
N5	% pumped concrete on total ready-mixed concrete	70%	70%	E
N6	Total number of pumps	200	200	E

(*) E = Estimated value

Country	FRANCE
----------------	---------------

		Y 2000	Y 2001	Comments (*)
A	Total number of ready-mixed concrete producers			
A1	Country	560	520	
A2	Members	186	189	
B	Total number of employees/workers			
B1	Country	6843	7000	
B2	Members	4976	5460	
C	Turnover including transport – (millions of €)			
C1	Country	2525	2600	
C2	Members	1970	2028	
D	Total ready-mixed concrete production (millions of m³)			
D1	Country	34.3	34.5	E
D2	Members	26.8	25.9	
E	Plants			
E1	Total number of plants - Country	1647	1626	
E11	% of static mixing plants	100%	100%	
E12	% of dry batching plants	0%	0%	
E2	Total number of plants - Members	1175	1140	
E21	% of static mixing plants	100%	100%	
E22	% of dry batching plants	0%	0%	
Data F to I refer to total concrete production in France				
F	Concrete			
F1	Total production including site-mixed and precast (millions of m ³)	-	-	
F2	% of ready-mixed concrete	-%	-%	
F3	% of site-mixed concrete	-%	-%	
F4	% of precast concrete	-%	-%	
G	Cement			
G1	Total cement consumption (millions of tons)	20.6	20.6	
G2	% to ready-mixed concrete	47%	47.6%	
G3	% to site-mixed concrete	4%	2.5%	
G4	% to precast concrete	18%	18.5%	
G5	% to other uses (mortar, repair, restoration, etc)	31%	31.4%	
G6	Average Dosage in ready-mixed concrete (kg/m ³)	280	284	
H	Addition			
H1	Most commonly used addition	-	-	
H2	Total consumption of addition I (millions of tons)	-	-	
H3	Average dosage in ready-mixed concrete (kg/m ³)	-	-	
On total ready-mixed concrete production:				
I	Type/dimension of specimen for strength tests	Cyl 160*320mm	Cyl 160*320mm	
J	% per strength class			
	strength (N/mm ²)			
J1	<=15	-%	20%	
J2	>15 <=25	60%	60%	
J3	>25 <= 35	-%	15%	
J4	>35	-%	5%	
K	Preferred method for measurement of consistence	Slump	Slump (S)	
L	% per consistence class			
L1	S1	-%	-%	
L2	S2 - S3	80%	80%	
L3	S4 - S5+	-%	-%	
M	Delivery method			
M1	% Company vehicles	13%	13%	
M2	% Outside contractors	75%	75%	
M3	% Customer collection	12%	12%	
N	Truck, Mixer, Pumps			
N1	Total number of truck mixers / delivery vehicles	6000	6000	
N2	% under 6 m ³	70%	70%	
N3	% 6-8 m ³	27%	27%	
N4	% over 8 m ³	3%	3%	
N5	% pumped concrete on total ready-mixed concrete	12%	12%	
N6	Total number of pumps	-	-	

(*) E = Estimated value

Country	Germany
---------	---------

		Y 2000	Y 2001	Comments (*)
A	Total number of ready-mixed concrete producers			
A1	Country	1122	1066	
A2	Members	599	581	
B	Total number of employees/workers			
B1	Country	13700	13000	
B2	Members	8721	8412	
C	Turnover including transport – (millions of €)			
C1	Country	3692	3166	
C2	Members	2428	2132	
D	Total ready-mixed concrete production (millions of m³)			
D1	Country	57.9	51.1	
D2	Members	37.5	33.8	
E	Plants			
E1	Total number of plants - Country	2334	2132	
E11	% of static mixing plants	100%	100%	
E12	% of dry batching plants	0%	0%	
E2	Total number of plants - Members	1345	1368	
E21	% of static mixing plants	100%	100%	
E22	% of dry batching plants	0%	0%	
Data F to I refer to total concrete production in Germany				
F	Concrete			
F1	Total production including site-mixed and precast (millions of m ³)	105	92	
F2	% of ready-mixed concrete	55%	55%	
F3	% of site-mixed concrete	10%	9%	
F4	% of precast concrete	35%	36%	
G	Cement			
G1	Total cement consumption (millions of tons)	35.75	31.5	
G2	% to ready-mixed concrete	47.1%	46.4%	
G3	% to site-mixed concrete	9.4%	8.6%	
G4	% to precast concrete	31%	33.3%	
G5	% to other uses (mortar, repair, restoration, etc)	12.5%	11.7%	
G6	Average Dosage in ready-mixed concrete (kg/m ³)	290	285	
H	Addition			
H1	Most commonly used addition	-	-	
H2	Total consumption of addition I (millions of tons)	4	-	
H3	Average dosage in ready-mixed concrete (kg/m ³)	40	-	
On total ready-mixed concrete production:				
I	Type/dimension of specimen for strength tests	-	-	
J	% per strength class			
	strength (N/mm ²)			
J1	<=15	3.7%	3.5%	
J2	>15 <=25	12.8%	13.7%	
J3	>25 <= 35	63.4%	63.1%	
J4	>35	20.1%	19.7%	
K	Preferred method for measurement of consistence	Slump	-	
L	% per consistence class			
L1	S1	12%	11.9%	
L2	S2 - S3	83.6%	83%	
L3	S4 - S5+	4.4%	5.1%	
M	Delivery method			
M1	% Company vehicles	30%	-%	
M2	% Outside contractors	60%	-%	
M3	% Customer collection	10%	-%	
N	Truck, Mixer, Pumps			
N1	Total number of truck mixers / delivery vehicles	12925	12189	
N2	% under 6 m ³	28.6%	26.1%	
N3	% 6-8 m ³	66.5%	67.5%	
N4	% over 8 m ³	4.9%	6.4%	
N5	% pumped concrete on total ready-mixed concrete	40%	40%	
N6	Total number of pumps	2310	2232	

(*) E = Estimated value

Country	IRELAND
---------	---------

		Y 2000	Y 2001	Comments (*)
A	Total number of ready-mixed concrete producers			
A1	Country	120	125	
A2	Members	100	100	
B	Total number of employees/workers			
B1	Country	-	-	
B2	Members	10000	10000	
C	Turnover including transport – (millions of €)			
C1	Country	400	420	
C2	Members	333	350	
D	Total ready-mixed concrete production (millions of m³)			
D1	Country	5.85	6	
D2	Members	4.88	5.5	
E	Plants			
E1	Total number of plants - Country	-	-	
E11	% of static mixing plants	- %	- %	
E12	% of dry batching plants	- %	- %	
E2	Total number of plants - Members	200	220	
E21	% of static mixing plants	100 %	100 %	
E22	% of dry batching plants	0 %	0 %	
Data F to I refer to total concrete production in Ireland				
F	Concrete			
F1	Total production including site-mixed and precast (millions of m ³)	6.5	6.2	
F2	% of ready-mixed concrete	90 %	90 %	
F3	% of site-mixed concrete	0 %	0 %	
F4	% of precast concrete	10 %	10 %	
G	Cement			
G1	Total cement consumption (millions of tons)	3	3	
G2	% to ready-mixed concrete	90 %	90 %	
G3	% to site-mixed concrete	0 %	0 %	
G4	% to precast concrete	10 %	10 %	
G5	% to other uses (mortar, repair, restoration, etc)	0 %	0 %	
G6	Average Dosage in ready-mixed concrete (kg/m ³)	300	300	
H	Addition			
H1	Most commonly used addition	-	-	
H2	Total consumption of addition I (millions of tons)	-	-	
H3	Average dosage in ready-mixed concrete (kg/m ³)	-	-	
On total ready-mixed concrete production:				
I	Type/dimension of specimen for strength tests	-	-	
J	% per strength class			
	strength (N/mm ²)			
J1	<=15	5 %	5 %	
J2	>15 <=25	15 %	15 %	
J3	>25 <= 35	40 %	40 %	
J4	>35	40 %	40 %	
K	Preferred method for measurement of consistence	Slump		
L	% per consistence class			
L1	S1	15 %	15 %	
L2	S2 - S3	65 %	65 %	
L3	S4 - S5+	20 %	20 %	
M	Delivery method			
M1	% Company vehicles	30 %	30 %	
M2	% Outside contractors	65 %	65 %	
M3	% Customer collection	5 %	5 %	
N	Truck, Mixer, Pumps			
N1	Total number of truck mixers / delivery vehicles	600	650	
N2	% under 6 m ³	5 %	5 %	
N3	% 6-8 m ³	20 %	20 %	
N4	% over 8 m ³	75 %	75 %	
N5	% pumped concrete on total ready-mixed concrete	20 %	20 %	
N6	Total number of pumps	10	12	

(*) E = Estimated value

Country	ITALY
---------	-------

		Y 2000	Y 2001	Comments (*)
A	Total number of ready-mixed concrete producers			
A1	Country	1550	1500	
A2	Members	260	296	
B	Total number of employees/workers			
B1	Country	20000	19000	
B2	Members	9500	10800	
C	Turnover including transport – (millions of €)			
C1	Country	3100	3220	
C2	Members	1660	1910	
D	Total ready-mixed concrete production (millions of m³)			
D1	Country	66.5	66.8	
D2	Members	30	33	
E	Plants			
E1	Total number of plants - Country	2430	2450	
E11	% of static mixing plants	5 %	5 %	
E12	% of dry batching plants	95 %	95 %	
E2	Total number of plants - Members	965	1027	
E21	% of static mixing plants	8 %	8 %	
E22	% of dry batching plants	92 %	92 %	
Data F to I refer to total concrete production in Italy				
F	Concrete			
F1	Total production including site-mixed and precast (millions of m ³)	134	135	
F2	% of ready-mixed concrete	48.6 %	49 %	
F3	% of site-mixed concrete	14.7 %	14 %	
F4	% of precast concrete	36.7 %	37 %	
G	Cement			
G1	Total cement consumption (millions of tons)	38	39.8	
G2	% to ready-mixed concrete	46 %	44.5 %	
G3	% to site-mixed concrete	33 %	34 %	
G4	% to precast concrete	13 %	12.5 %	
G5	% to other uses (mortar, repair, restoration, etc)	8 %	9 %	
G6	Average Dosage in ready-mixed concrete (kg/m ³)	265	265	
H	Addition			
H1	Most commonly used addition	-	-	
H2	Total consumption of addition I (millions of tons)	-	-	
H3	Average dosage in ready-mixed concrete (kg/m ³)	-	-	
On total ready-mixed concrete production:				
I	Type/dimension of specimen for strength tests	-	-	
J	% per strength class			
	strength (N/mm ²)			
J1	<=15	9 %	9 %	
J2	>15 <=25	61 %	61 %	
J3	>25 <= 35	29 %	29 %	
J4	>35	1 %	1 %	
K	Preferred method for measurement of consistence	Slump	Slump (S)	
L	% per consistence class			
L1	S1	- %	- %	
L2	S2 - S3	- %	- %	
L3	S4 - S5+	- %	- %	
M	Delivery method			
M1	% Company vehicles	48 %	46 %	
M2	% Outside contractors	50 %	52 %	
M3	% Customer collection	2 %	2 %	
N	Truck, Mixer, Pumps			
N1	Total number of truck mixers / delivery vehicles	11236	11300	
N2	% under 6 m ³	- %	- %	
N3	% 6-8 m ³	- %	- %	
N4	% over 8 m ³	- %	- %	
N5	% pumped concrete on total ready-mixed concrete	40 %	42 %	
N6	Total number of pumps	4350	4500	

(*) E = Estimated value

Country	NETHERLANDS
---------	-------------

		Y 2000	Y 2001	Comments (*)
A	Total number of ready-mixed concrete producers			
A1	Country	100	100	E
A2	Members	85	85	E
B	Total number of employees/workers			
B1	Country	2500	2500	E
B2	Members	2150	2150	E
C	Turnover including transport – (millions of €)			
C1	Country	600	600	E
C2	Members	510	510	E
D	Total ready-mixed concrete production (millions of m³)			
D1	Country	8.5	8.5	E
D2	Members	7.6	7.6	E
E	Plants			
E1	Total number of plants - Country	180	180	E
E11	% of static mixing plants	98%	98%	E
E12	% of dry batching plants	2%	2%	E
E2	Total number of plants - Members	143	143	E
E21	% of static mixing plants	98%	98%	E
E22	% of dry batching plants	2%	2%	E
Data F to I refer to total concrete production in Netherlands				
F	Concrete			
F1	Total production including site-mixed and precast (millions of m ³)	15	15	E
F2	% of ready-mixed concrete	53%	53%	E
F3	% of site-mixed concrete	2%	2%	E
F4	% of precast concrete	45%	45%	E
G	Cement			
G1	Total cement consumption (millions of tons)	6.25	5.88	
G2	% to ready-mixed concrete	47%	-	
G3	% to site-mixed concrete	-	-	
G4	% to precast concrete	40%	-	
G5	% to other uses (mortar, repair, restoration, etc)	13%	-	
G6	Average Dosage in ready-mixed concrete (kg/m ³)	312	312	E
H	Addition			
H1	Most commonly used addition	-	-	
H2	Total consumption of addition I (millions of tons)	-	-	
H3	Average dosage in ready-mixed concrete (kg/m ³)	65	65	E
On total ready-mixed concrete production:				
I	Type/dimension of specimen for strength tests	-	-	
J	% per strength class			
	strength (N/mm ²)			
J1	<=15	2%	2%	E
J2	>15 <=25	71%	71%	E
J3	>25 <= 35	24%	24%	E
J4	>35	3%	3%	E
K	Preferred method for measurement of consistence	Slump	Slump	
L	% per consistence class			
L1	S1	-	-	
L2	S2 - S3	-	-	
L3	S4 - S5+	-	-	
M	Delivery method			
M1	% Company vehicles	89%	89%	E
M2	% Outside contractors	9%	9%	E
M3	% Customer collection	2%	2%	E
N	Truck, Mixer, Pumps			
N1	Total number of truck mixers / delivery vehicles	1200	1200	E
N2	% under 6 m ³	1%	1%	E
N3	% 6-8 m ³	35%	35%	E
N4	% over 8 m ³	64%	64%	E
N5	% pumped concrete on total ready-mixed concrete	-	-	
N6	Total number of pumps	-	-	

(*) E = Estimated value

Country	NORWAY
---------	--------

		Y 2000	Y 2001	Comments (*)
A	Total number of ready-mixed concrete producers			
A1	Country	142	135	
A2	Members	80	80	
B	Total number of employees/workers			
B1	Country	1200	1250	E
B2	Members	990	934	
C	Turnover including transport – (millions of €)			
C1	Country	254.9	277	E
C2	Members	218.3	245	E
D	Total ready-mixed concrete production (millions of m³)			
D1	Country	2.3	2.22	
D2	Members	1.97	1.96	
E	Plants			
E1	Total number of plants - Country	214	210	
E11	% of static mixing plants	98%	99%	E
E12	% of dry batching plants	2%	1%	E
E2	Total number of plants - Members	149	154	
E21	% of static mixing plants	99%	98%	
E22	% of dry batching plants	1%	2%	
Data F to I refer to total concrete production in Norway				
F	Concrete			
F1	Total production including site-mixed and precast (millions of m ³)	3.62	3.49	E
F2	% of ready-mixed concrete	68.9%	68.9%	
F3	% of site-mixed concrete	4.5%	4.5%	
F4	% of precast concrete	26.6%	26.6%	
G	Cement			
G1	Total cement consumption (millions of tons)	1.282	1.24	
G2	% to ready-mixed concrete	62.4%	58.77%	
G3	% to site-mixed concrete	4.6%	5.79%	
G4	% to precast concrete	27%	25.69%	
G5	% to other uses (mortar, repair, restoration, etc)	6%	9.75%	
G6	Average Dosage in ready-mixed concrete (kg/m ³)	320	327	
H	Addition			
H1	Most commonly used addition	-	Other	
H2	Total consumption of addition I (millions of tons)	-	0.01	(RMC) E
H3	Average dosage in ready-mixed concrete (kg/m ³)	-	3	
On total ready-mixed concrete production:				
I	Type/dimension of specimen for strength tests	Cube 10x10x10	Cu 10x10x10	
J	% per strength class			
	strength (N/mm ²)			
J1	<=15	0%	0.5%	
J2	>15 <=25	22.7%	19.5%	
J3	>25 <= 35	53.9%	59.1%	
J4	>35	23.4%	20.9%	
K	Preferred method for measurement of consistence	Slump	Slump (S)	
L	% per consistence class			
L1	S1	-%	1%	E
L2	S2 - S3	-%	0%	E
L3	S4 - S5+	-%	99%	E
M	Delivery method			
M1	% Company vehicles	27.2%	38.9%	
M2	% Outside contractors	72.1%	60%	
M3	% Customer collection	0.6%	1.1%	
N	Truck, Mixer, Pumps			
N1	Total number of truck mixers / delivery vehicles	690		
N2	% under 6 m ³	9%	2%	E
N3	% 6-8 m ³	91%	96%	E
N4	% over 8 m ³	0%	2%	E
N5	% pumped concrete on total ready-mixed concrete	45%	45%	E
N6	Total number of pumps	215	220	E

(*) E = Estimated value

Country	POLAND
---------	--------

		Y 2000	Y 2001	Comments (*)
A	Total number of ready-mixed concrete producers			
A1	Country	-	380	
A2	Members	-	29	
B	Total number of employees/workers			
B1	Country	-	3500	
B2	Members	-	1200	
C	Turnover including transport – (millions of €)			
C1	Country	-	400	
C2	Members	-	180	
D	Total ready-mixed concrete production (millions of m³)			
D1	Country	10	9	
D2	Members	-	3.6	
E	Plants			
E1	Total number of plants - Country	-	700	
E11	% of static mixing plants	-%	98.6	%
E12	% of dry batching plants	-%	1.4	%
E2	Total number of plants - Members	-	170	
E21	% of static mixing plants	-%	98.3	%
E22	% of dry batching plants	-%	1.7	%
Data F to I refer to total concrete production in Poland				
F	Concrete			
F1	Total production including site-mixed and precast (millions of m ³)	-	32	
F2	% of ready-mixed concrete	-%	27	%
F3	% of site-mixed concrete	-%	42	%
F4	% of precast concrete	-%	31	%
G	Cement			
G1	Total cement consumption (millions of tons)	14.29	12	
G2	% to ready-mixed concrete	-%	24	%
G3	% to site-mixed concrete	-%	38	%
G4	% to precast concrete	-%	29	%
G5	% to other uses (mortar, repair, restoration, etc)	-%	9	%
G6	Average Dosage in ready-mixed concrete (kg/m ³)	-	330	
H	Addition			
H1	Most commonly used addition	-	FA - Fly Ash	
H2	Total consumption of addition I (millions of tons)	-	0.07	
H3	Average dosage in ready-mixed concrete (kg/m ³)	-	40	
On total ready-mixed concrete production:				
I	Type/dimension of specimen for strength tests	-	Cu 15x15x15	
J	% per strength class			
	strength (N/mm ²)			
J1	<=15	-%	30	%
J2	>15 <=25	-%	40	%
J3	>25 <= 35	-%	25	%
J4	>35	-%	5	%
K	Preferred method for measurement of consistence	-	Slump (S)	
L	% per consistence class			
L1	S1	-%	10	%
L2	S2 - S3	-%	20	%
L3	S4 - S5+	-%	70	%
M	Delivery method			
M1	% Company vehicles	-%	45	%
M2	% Outside contractors	-%	45	%
M3	% Customer collection	-%	10	%
N	Truck, Mixer, Pumps			
N1	Total number of truck mixers / delivery vehicles	-	2500	
N2	% under 6 m ³	-%	50	%
N3	% 6-8 m ³	-%	35	%
N4	% over 8 m ³	-%	15	%
N5	% pumped concrete on total ready-mixed concrete	-%	35	%
N6	Total number of pumps	-	600	

(*) E = Estimated value

Country	PORTUGAL
---------	-----------------

		Y 2000	Y 2001	Comments (*)
A	Total number of ready-mixed concrete producers			
A1	Country	55	70	
A2	Members	18	25	
B	Total number of employees/workers			
B1	Country	1400	1300	E
B2	Members	1200	1100	
C	Turnover including transport – (millions of €)			
C1	Country	600	650	E
C2	Members	450	500	
D	Total ready-mixed concrete production (millions of m³)			
D1	Country	10	11.3	E
D2	Members	7.8	9.3	
E	Plants			
E1	Total number of plants - Country	210	270	
E11	% of static mixing plants	70%	70%	
E12	% of dry batching plants	30%	30%	
E2	Total number of plants - Members	125	155	
E21	% of static mixing plants	85%	85%	
E22	% of dry batching plants	15%	15%	
Data F to I refer to total concrete production in Portugal				
F	Concrete			
F1	Total production including site-mixed and precast (millions of m ³)	26.5	27	E
F2	% of ready-mixed concrete	40%	40%	
F3	% of site-mixed concrete	35%	35%	
F4	% of precast concrete	25%	25%	
G	Cement			
G1	Total cement consumption (millions of tons)	11.1	11.3	
G2	% to ready-mixed concrete	24%	26%	
G3	% to site-mixed concrete	20%	20%	
G4	% to precast concrete	12%	12%	
G5	% to other uses (mortar, repair, restoration, etc)	44%	42%	
G6	Average Dosage in ready-mixed concrete (kg/m ³)	280	280	
H	Addition			
H1	Most commonly used addition	-	FA - Fly Ash	
H2	Total consumption of addition I (millions of tons)	0.3	0.3	
H3	Average dosage in ready-mixed concrete (kg/m ³)	60	60	
On total ready-mixed concrete production:				
I	Type/dimension of specimen for strength tests	Cube 15x15x15	Cu 15x15x15	
J	% per strength class			
	strength (N/mm ²)			
J1	<=15	0%	0%	
J2	>15 <=25	80%	75%	
J3	>25 <= 35	15%	20%	
J4	>35	5%	5%	
K	Preferred method for measurement of consistence	Slump	Slump (S)	
L	% per consistence class			
L1	S1	0%	0%	
L2	S2 - S3	95%	95%	
L3	S4 - S5+	5%	5%	
M	Delivery method			
M1	% Company vehicles	20%	20%	
M2	% Outside contractors	75%	75%	
M3	% Customer collection	5%	5%	
N	Truck, Mixer, Pumps			
N1	Total number of truck mixers / delivery vehicles	1600	1650	E
N2	% under 6 m ³	0%	0%	
N3	% 6-8 m ³	60%	60%	
N4	% over 8 m ³	40%	40%	
N5	% pumped concrete on total ready-mixed concrete	55%	55%	
N6	Total number of pumps	350	360	E

(*) E = Estimated value

Country	SLOVAK REPUBLIC
---------	------------------------

		Y 2000	Y 2001	Comments (*)
A	Total number of ready-mixed concrete producers			
A1	Country	70	70	E
A2	Members	11	11	
B	Total number of employees/workers			
B1	Country	900	900	E
B2	Members	262	304	
C	Turnover including transport – (millions of €)			
C1	Country	56.8	61.4	E
C2	Members	24.3	28.7	
D	Total ready-mixed concrete production (millions of m³)			
D1	Country	1.86	1.86	E
D2	Members	0.702	0.687	
E	Plants			
E1	Total number of plants - Country	100	100	
E11	% of static mixing plants	100%	100%	
E12	% of dry batching plants	0%	0%	
E2	Total number of plants - Members	28	34	
E21	% of static mixing plants	100%	100%	
E22	% of dry batching plants	0%	0%	
Data F to I refer to total concrete production in Slovak Republic				
F	Concrete			
F1	Total production including site-mixed and precast (millions of m ³)	2.86	3.21	E
F2	% of ready-mixed concrete	57%	58%	E
F3	% of site-mixed concrete	28%	26%	E
F4	% of precast concrete	15%	16%	E
G	Cement			
G1	Total cement consumption (millions of tons)	1.63	1.63	
G2	% to ready-mixed concrete	40%	40%	
G3	% to site-mixed concrete	20%	18%	E
G4	% to precast concrete	10%	11%	E
G5	% to other uses (mortar, repair, restoration, etc)	30%	31%	E
G6	Average Dosage in ready-mixed concrete (kg/m ³)	340	350	E
H	Addition			
H1	Most commonly used addition	-	FA - Fly Ash	
H2	Total consumption of addition I (millions of tons)	0	0.01	E
H3	Average dosage in ready-mixed concrete (kg/m ³)	0	50	E
On total ready-mixed concrete production:				
I	Type/dimension of specimen for strength tests	Cube 15x15x15	Cu 15x15x15	
J	% per strength class			
	strength (N/mm ²)			
J1	<=15	15%	15%	E
J2	>15 <=25	50%	50%	E
J3	>25 <= 35	30%	30%	E
J4	>35	5%	5%	E
K	Preferred method for measurement of consistence	Slump	Slump (S)	
L	% per consistence class			
L1	S1	10%	10%	E
L2	S2 - S3	80%	80%	E
L3	S4 - S5+	10%	10%	E
M	Delivery method			
M1	% Company vehicles	65%	62%	E
M2	% Outside contractors	15%	21%	E
M3	% Customer collection	20%	17%	E
N	Truck, Mixer, Pumps			
N1	Total number of truck mixers / delivery vehicles	300	300	E
N2	% under 6 m ³	95%	92%	E
N3	% 6-8 m ³	4%	4%	E
N4	% over 8 m ³	1%	4%	E
N5	% pumped concrete on total ready-mixed concrete	15%	16%	E
N6	Total number of pumps	30	38	E

(*) E = Estimated value

Country	SPAIN
---------	-------

		Y 2000	Y 2001	Comments (*)
A	Total number of ready-mixed concrete producers			
A1	Country	500	500	
A2	Members	333	364	
B	Total number of employees/workers			
B1	Country	15000	15000	
B2	Members	10400	12400	
C	Turnover including transport – (millions of €)			
C1	Country	3850	2990	
C2	Members	1947	2200	
D	Total ready-mixed concrete production (millions of m³)			
D1	Country	64	71.1	
D2	Members	46.28	52.3	
E	Plants			
E1	Total number of plants - Country	1500	1,500	
E11	% of static mixing plants	30%	30%	
E12	% of dry batching plants	70%	70%	
E2	Total number of plants - Members	1216	1,300	
E21	% of static mixing plants	30%	30%	
E22	% of dry batching plants	70%	70%	
Data F to I refer to total concrete production in Spain				
F	Concrete			
F1	Total production including site-mixed and precast (millions of m ³)	124	124	
F2	% of ready-mixed concrete	52%	57%	
F3	% of site-mixed concrete	23%	21%	
F4	% of precast concrete	25%	22%	
G	Cement			
G1	Total cement consumption (millions of tons)	38.5	42	
G2	% to ready-mixed concrete	42%	48%	
G3	% to site-mixed concrete	18%	12%	
G4	% to precast concrete	20%	20%	
G5	% to other uses (mortar, repair, restoration, etc)	20%	20%	
G6	Average Dosage in ready-mixed concrete (kg/m ³)	250	283	
H	Addition			
H1	Most commonly used addition	-	Fly Ash	
H2	Total consumption of addition I (millions of tons)	-	-	
H3	Average dosage in ready-mixed concrete (kg/m ³)	-	-	
On total ready-mixed concrete production:				
I	Type/dimension of specimen for strength tests	Cyl 150x300	Cyl 150X300	
J	% per strength class			
	strength (N/mm ²)			
J1	<=15	5%	5%	
J2	>15 <=25	5%	5%	
J3	>25 <= 35	80%	80%	
J4	>35	10%	10%	
K	Preferred method for measurement of consistence	Slump	Slump	
L	% per consistence class			
L1	S1	0%	0%	
L2	S2 - S3	80%	80%	
L3	S4 - S5+	20%	20%	
M	Delivery method			
M1	% Company vehicles	40%	40%	
M2	% Outside contractors	60%	60%	
M3	% Customer collection	0%	0%	
N	Truck, Mixer, Pumps			
N1	Total number of truck mixers / delivery vehicles	-	-	
N2	% under 6 m ³	85%	90%	
N3	% 6-8 m ³	10%	5%	
N4	% over 8 m ³	5%	5%	
N5	% pumped concrete on total ready-mixed concrete	12%	15%	
N6	Total number of pumps	-	-	

(*) E = Estimated value

Country	SWEDEN
---------	--------

		Y 2000	Y 2001	Comments (*)
A	Total number of ready-mixed concrete producers			
A1	Country	40	42	
A2	Members	36	36	
B	Total number of employees/workers			
B1	Country	1010	1020	
B2	Members	1000	1000	
C	Turnover including transport – (millions of €)			
C1	Country		-	
C2	Members	200	220	
D	Total ready-mixed concrete production (millions of m³)			
D1	Country	2.4	2.6	
D2	Members	2.3	2.4	
E	Plants			
E1	Total number of plants - Country	212	212	
E11	% of static mixing plants	100%	100%	
E12	% of dry batching plants	0%	0%	
E2	Total number of plants - Members	208	208	
E21	% of static mixing plants	100%	100%	
E22	% of dry batching plants	0%	0%	
Data F to I refer to total concrete production in Sweden				
F	Concrete			
F1	Total production including site-mixed and precast (millions of m ³)	3.8	4	
F2	% of ready-mixed concrete	60%	60%	
F3	% of site-mixed concrete	1%	1%	
F4	% of precast concrete	39%	39%	
G	Cement			
G1	Total cement consumption (millions of tons)	1.5	1.6	
G2	% to ready-mixed concrete	55%	55%	
G3	% to site-mixed concrete	1%	1%	
G4	% to precast concrete	30%	30%	
G5	% to other uses (mortar, repair, restoration, etc)	14%	14%	
G6	Average Dosage in ready-mixed concrete (kg/m ³)	340	340	
H	Addition			
H1	Most commonly used addition		SF - Silica Fume	
H2	Total consumption of addition I (millions of tons)	0	0.01	
H3	Average dosage in ready-mixed concrete (kg/m ³)	0	15	
On total ready-mixed concrete production:				
I	Type/dimension of specimen for strength tests	Cube 15x15x15	Cu 15x15x15	
J	% per strength class			
	strength (N/mm ²)			
J1	<=15	0%	0%	
J2	>15 <=25	5%	5%	
J3	>25 <= 35	63%	65%	
J4	>35	32%	30%	
K	Preferred method for measurement of consistence	Slump	Slump (S)	
L	% per consistence class			
L1	S1	3%	3%	
L2	S2 - S3	57%	57%	
L3	S4 - S5+	40%	40%	
M	Delivery method			
M1	% Company vehicles	20%	20%	
M2	% Outside contractors	80%	80%	
M3	% Customer collection	0%	0%	
N	Truck, Mixer, Pumps			
N1	Total number of truck mixers / delivery vehicles	600	600	
N2	% under 6 m ³	50%	45%	
N3	% 6-8 m ³	50%	55%	
N4	% over 8 m ³	0%	0%	
N5	% pumped concrete on total ready-mixed concrete	45%	45%	
N6	Total number of pumps	50	90	

(*) E = Estimated value

Country	SWITZERLAND
---------	-------------

		Y 2000	Y 2001	Comments (*)
A	Total number of ready-mixed concrete producers			
A1	Country	172	162	
A2	Members	153	147	
B	Total number of employees/workers			
B1	Country	-	-	
B2	Members	-	-	
C	Turnover including transport – (millions of €)			
C1	Country	-	-	
C2	Members	-	-	
D	Total ready-mixed concrete production (millions of m³)			
D1	Country	10.52	10.90	E
D2	Members	9.36	9.89	
E	Plants			
E1	Total number of plants - Country	259	251	
E11	% of static mixing plants	100%	100%	
E12	% of dry batching plants	0%	0%	
E2	Total number of plants - Members	235	229	
E21	% of static mixing plants	100%	100%	
E22	% of dry batching plants	0%	0%	
Data F to I refer to total concrete production in Switzerland				
F	Concrete			
F1	Total production including site-mixed and precast (millions of m ³)	-	-	
F2	% of ready-mixed concrete	-%	-%	
F3	% of site-mixed concrete	-%	-%	
F4	% of precast concrete	-%	-%	
G	Cement			
G1	Total cement consumption (millions of tons)	3.93	3.93	
G2	% to ready-mixed concrete	72.3%	71.4%	
G3	% to site-mixed concrete	15.4%	17.3%	
G4	% to precast concrete	8.4%	7.6%	
G5	% to other uses (mortar, repair, restoration, etc)	3.9%	3.7%	
G6	Average Dosage in ready-mixed concrete (kg/m ³)	287	287	
H	Addition			
H1	Most commonly used addition			
H2	Total consumption of addition I (millions of tons)	-	-	
H3	Average dosage in ready-mixed concrete (kg/m ³)	-	-	
On total ready-mixed concrete production:				
I	Type/dimension of specimen for strength tests	-		
J	% per strength class			
	strength (N/mm ²)			
J1	<=15	-%	-%	
J2	>15 <=25	-%	-%	
J3	>25 <= 35	-%	-%	
J4	>35	-%	-%	
K	Preferred method for measurement of consistence	Slump		
L	% per consistence class			
L1	S1	-%	-%	
L2	S2 - S3	-%	-%	
L3	S4 - S5	-%	-%	
M	Delivery method			
M1	% Company vehicles	-%	-%	
M2	% Outside contractors	-%	-%	
M3	% Customer collection	-%	-%	
N	Truck, Mixer, Pumps			
N1	Total number of truck mixers / delivery vehicles	-	-	
N2	% under 6 m ³	34%	27.7%	
N3	% 6-8 m ³	60%	67.3%	
N4	% over 8 m ³	6%	5%	
N5	% pumped concrete on total ready-mixed concrete	18.5%	20.8%	
N6	Total number of pumps	-	-	

(*) E = Estimated value

Country	TURKEY
---------	--------

		Y 2000	Y 2001	Comments (*)
A	Total number of ready-mixed concrete producers			
A1	Country	185	205	
A2	Members	67	69	
B	Total number of employees/workers			
B1	Country	11629	10720	
B2	Members	7805	7191	
C	Turnover including transport – (millions of €)			
C1	Country	943	646	
C2	Members	734	473.7	
D	Total ready-mixed concrete production (millions of m³)			
D1	Country	27	25.4	
D2	Members	21	18	
E	Plants			
E1	Total number of plants - Country	368	401	
E11	% of static mixing plants	75 %	75 %	
E12	% of dry batching plants	25 %	25 %	
E2	Total number of plants - Members	247	253	
E21	% of static mixing plants	75 %	75.5 %	
E22	% of dry batching plants	25 %	24.5 %	
Data F to I refer to total concrete production in Turkey				
F	Concrete			
F1	Total production including site-mixed and precast (millions of m ³)	27	27.55	
F2	% of ready-mixed concrete	55 %	92.2 %	
F3	% of site-mixed concrete	10 %	3.6 %	
F4	% of precast concrete	35 %	4.2 %	
G	Cement			
G1	Total cement consumption (millions of tons)	31	25	
G2	% to ready-mixed concrete	31 %	32 %	
G3	% to site-mixed concrete	16 %	1.6 %	
G4	% to precast concrete	3 %	1.6 %	
G5	% to other uses (mortar, repair, restoration, etc)	50 %	64.8 %	including hand made concrete
G6	Average Dosage in ready-mixed concrete (kg/m ³)	290	280	
H	Addition			
H1	Most commonly used addition		FA - Fly Ash	
H2	Total consumption of addition I (millions of tons)	-	3	
H3	Average dosage in ready-mixed concrete (kg/m ³)	-	50	
On total ready-mixed concrete production:				
I	Type/dimension of specimen for strength tests	-	Cu 15x15x15	
J	% per strength class			
	strength (N/mm ²)			
J1	<=15	11.5 %	7 %	
J2	>15 <=25	84.8 %	87.2 %	
J3	>25 <= 35	3.2 %	5 %	
J4	>35	0.5 %	0.8 %	
K	Preferred method for measurement of consistence	Slump	Slump (S)	
L	% per consistence class			
L1	S1	1 %	1 %	E
L2	S2 - S3	34 %	34 %	E
L3	S4 - S5+	65 %	65 %	E
M	Delivery method			
M1	% Company vehicles	68 %	68 %	
M2	% Outside contractors	31 %	31 %	
M3	% Customer collection	1 %	1 %	
N	Truck, Mixer, Pumps			
N1	Total number of truck mixers / delivery vehicles	2778	2856	
N2	% under 6 m ³	0 %	0 %	E
N3	% 6-8 m ³	90 %	88 %	E
N4	% over 8 m ³	10 %	12 %	E
N5	% pumped concrete on total ready-mixed concrete	80 %	75.5 %	
N6	Total number of pumps	688	690	

(*) E = Estimated value

Country	UNITED KINGDOM
---------	----------------

		Y 2000	Y 2001	Comments (*)
A	Total number of ready-mixed concrete producers			
A1	Country	200	200	E
A2	Members	24	24	E
B	Total number of employees/workers			
B1	Country	10500	10500	E
B2	Members	10000	10000	E
C	Turnover including transport – (millions of €)			
C1	Country	1844	1844	E
C2	Members	1802	1802	E
D	Total ready-mixed concrete production (millions of m³)			
D1	Country	23.04	23.04	E
D2	Members	22.52	22.52	E
E	Plants			
E1	Total number of plants - Country	1250	1250	E
E11	% of static mixing plants	20%	20%	E
E12	% of dry batching plants	80%	80%	E
E2	Total number of plants - Members	1040	1040	E
E21	% of static mixing plants	25%	25%	E
E22	% of dry batching plants	75%	75%	E
Data F to I refer to total concrete production in United Kingdom				
F	Concrete			
F1	Total production including site-mixed and precast (millions of m ³)	33.87	33.87	E
F2	% of ready-mixed concrete	66%	66%	E
F3	% of site-mixed concrete	2%	2%	E
F4	% of precast concrete	32%	32%	E
G	Cement			
G1	Total cement consumption (millions of tons)	12	12.5	E
G2	% to ready-mixed concrete	60%	60%	E
G3	% to site-mixed concrete	1%	1%	E
G4	% to precast concrete	29%	29%	E
G5	% to other uses (mortar, repair, restoration, etc)	10%	10%	E
G6	Average Dosage in ready-mixed concrete (kg/m ³)	280	280	E
H	Addition			
H1	Most commonly used addition			
H2	Total consumption of addition I (millions of tons)	0.5	0.5	E
H3	Average dosage in ready-mixed concrete (kg/m ³)	90	90	E
On total ready-mixed concrete production:				
I	Type/dimension of specimen for strength tests			
J	% per strength class			
	strength (N/mm ²)			
J1	<=15	9%	9%	E
J2	>15 <=25	21%	21%	E
J3	>25 <= 35	46%	46%	E
J4	>35	24%	24%	E
K	Preferred method for measurement of consistence	Slump	Slump	
L	% per consistence class			
L1	S1	3%	3%	E
L2	S2 - S3	96%	96%	E
L3	S4 - S5+	1%	1%	E
M	Delivery method			
M1	% Company vehicles	14%	14%	E
M2	% Outside contractors	82%	82%	E
M3	% Customer collection	4%	4%	E
N	Truck, Mixer, Pumps			
N1	Total number of truck mixers / delivery vehicles	6000	6000	E
N2	% under 6 m ³	5%	5%	E
N3	% 6-8 m ³	95%	95%	E
N4	% over 8 m ³	0%	0%	E
N5	% pumped concrete on total ready-mixed concrete	5%	5%	E
N6	Total number of pumps		-	

(*) E = Estimated value

Country	CUBA
---------	------

		Y 2000	Y 2001	Comments (*)
A	Total number of ready-mixed concrete producers			
A1	Country	24	24	
A2	Members	1	1	
B	Total number of employees/workers			
B1	Country	1180	1100	E
B2	Members	480	345	
C	Turnover including transport – (millions of €)			
C1	Country			
C2	Members	20	0.88	
D	Total ready-mixed concrete production (millions of m³)			
D1	Country	0.343	0.3	E
D2	Members	0.157	0.131	
E	Plants			
E1	Total number of plants - Country	43	42	
E11	% of static mixing plants	30%	30%	
E12	% of dry batching plants	70%	70%	
E2	Total number of plants - Members	5	6	
E21	% of static mixing plants	0%	0%	
E22	% of dry batching plants	100%	100%	
Data F to I refer to total concrete production in Cuba				
F	Concrete			
F1	Total production including site-mixed and precast (millions of m ³)	0.645	0.73	
F2	% of ready-mixed concrete	53%	60%	
F3	% of site-mixed concrete	26%	20%	
F4	% of precast concrete	21%	20%	
G	Cement			
G1	Total cement consumption (millions of tons)	0.187	0.22	
G2	% to ready-mixed concrete	35%	40%	
G3	% to site-mixed concrete	20%	15%	
G4	% to precast concrete	25%	25%	
G5	% to other uses (mortar, repair, restoration, etc)	20%	20%	
G6	Average Dosage in ready-mixed concrete (kg/m ³)	300	300	
H	Addition			
H1	Most commonly used addition	-	Other	
H2	Total consumption of addition I (millions of tons)	0	-	
H3	Average dosage in ready-mixed concrete (kg/m ³)	0	-	
On total ready-mixed concrete production:				
I	Type/dimension of specimen for strength tests	Cyl 15x30	Cyl 15x30	
J	% per strength class			
	strength (N/mm ²)			
J1	<=15	3%	2%	
J2	>15 <=25	61%	58%	
J3	>25 <= 35	36%	38%	
J4	>35	0%	2%	
K	Preferred method for measurement of consistence	Slump	Slump (S)	
L	% per consistence class			
L1	S1	0%	0%	
L2	S2 - S3	26%	25%	
L3	S4 - S5+	74%	75%	
M	Delivery method			
M1	% Company vehicles	85%	70%	
M2	% Outside contractors	15%	30%	
M3	% Customer collection	0%	0%	
N	Truck, Mixer, Pumps			
N1	Total number of truck mixers / delivery vehicles	200	160	
N2	% under 6 m ³	20%	12%	
N3	% 6-8 m ³	37%	48%	
N4	% over 8 m ³	43%	40%	
N5	% pumped concrete on total ready-mixed concrete	10%	15%	
N6	Total number of pumps	7	4	

(*) E = Estimated value

Country	ISRAEL
---------	--------

		Y 2000	Y 2001	Comments (*)
A	Total number of ready-mixed concrete producers			
A1	Country	41	45	
A2	Members	18	17	
B	Total number of employees/workers			
B1	Country	1300	1100	
B2	Members	1000	800	
C	Turnover including transport – (millions of €)			
C1	Country	395	329	
C2	Members	325	262	
D	Total ready-mixed concrete production (millions of m³)			
D1	Country	8.7	7.9	
D2	Members	6.9	6.3	
E	Plants			
E1	Total number of plants - Country	221	228	
E11	% of static mixing plants	3.2%	3.7%	
E12	% of dry batching plants	96.8%	96.3%	
E2	Total number of plants - Members	189	182	
E21	% of static mixing plants	2.6%	2.6%	
E22	% of dry batching plants	97.4%	97.4%	
Data F to I refer to total concrete production in Israel				
F	Concrete			
F1	Total production including site-mixed and precast (millions of m ³)	10.2	9.7	
F2	% of ready-mixed concrete	86%	86%	
F3	% of site-mixed concrete	2%	2%	
F4	% of precast concrete	12%	12%	
G	Cement			
G1	Total cement consumption (millions of tons)	5.2	3.9	
G2	% to ready-mixed concrete	52%	58%	
G3	% to site-mixed concrete	1%	1%	
G4	% to precast concrete	9%	9%	
G5	% to other uses (mortar, repair, restoration, etc)	38%	32%	
G6	Average Dosage in ready-mixed concrete (kg/m ³)	300	280	
H	Addition			
H1	Most commonly used addition	-		
H2	Total consumption of addition I (millions of tons)	0.2	0.45	
H3	Average dosage in ready-mixed concrete (kg/m ³)	180	180	
On total ready-mixed concrete production:				
I	Type/dimension of specimen for strength tests	Cube 10x10x10	Cube 10x10x10	
J	% per strength class			
	strength (N/mm ²)			
J1	<=15	5%	3%	
J2	>15 <=25	20%	15%	
J3	>25 <= 35	60%	57%	
J4	>35	15%	25%	
K	Preferred method for measurement of consistence	Slump		
L	% per consistence class			
L1	S1	1%	1%	
L2	S2 - S3	4%	4%	
L3	S4 - S5+	95%	95%	
M	Delivery method			
M1	% Company vehicles	25%	25%	
M2	% Outside contractors	75%	75%	
M3	% Customer collection	0%	0%	
N	Truck, Mixer, Pumps			
N1	Total number of truck mixers / delivery vehicles	1550	-	
N2	% under 6 m ³	0%	0%	
N3	% 6-8 m ³	63%	55%	
N4	% over 8 m ³	37%	45%	
N5	% pumped concrete on total ready-mixed concrete	50%	55%	
N6	Total number of pumps		-	

(*) E = Estimated value

Country	RUSSIA
---------	--------

		Y 2000	Y 2001	Comments (*)
A	Total number of ready-mixed concrete producers			
A1	Country	550	550	
A2	Members	-	-	
B	Total number of employees/workers			
B1	Country	50000	50000	
B2	Members	-	-	
C	Turnover including transport – (millions of €)			
C1	Country	2400	2400	
C2	Members	-	-	
D	Total ready-mixed concrete production (millions of m³)			
D1	Country	35	35	
D2	Members	-	-	
E	Plants			
E1	Total number of plants - Country	1200	1200	
E11	% of static mixing plants	90%	90%	
E12	% of dry batching plants	10%	10%	
E2	Total number of plants - Members	-	-	
E21	% of static mixing plants	-%	-%	
E22	% of dry batching plants	-%	-%	
Data F to I refer to total concrete production in Russia				
F	Concrete			
F1	Total production including site-mixed and precast (millions of m ³)	50	50	
F2	% of ready-mixed concrete	25%	25%	
F3	% of site-mixed concrete	40%	40%	
F4	% of precast concrete	35%	35%	
G	Cement			
G1	Total cement consumption (millions of tons)	32	32	
G2	% to ready-mixed concrete	20%	20%	
G3	% to site-mixed concrete	35%	35%	
G4	% to precast concrete	25%	25%	
G5	% to other uses (mortar, repair, restoration, etc)	15%	15%	
G6	Average Dosage in ready-mixed concrete (kg/m ³)	360	360	
H	Addition			
H1	Most commonly used addition	-		
H2	Total consumption of addition I (millions of tons)	3.5	3.5	
H3	Average dosage in ready-mixed concrete (kg/m ³)	70	70	
On total ready-mixed concrete production:				
I	Type/dimension of specimen for strength tests	-		
J	% per strength class			
	strength (N/mm ²)			
J1	<=15	10%	10%	
J2	>15 <=25	70%	70%	
J3	>25 <= 35	15%	15%	
J4	>35	5%	5%	
K	Preferred method for measurement of consistence	Slump	Slump	
L	% per consistence class			
L1	S1	5%	5%	
L2	S2 - S3	90%	90%	
L3	S4 - S5+	5%	5%	
M	Delivery method			
M1	% Company vehicles	5%	5%	
M2	% Outside contractors	80%	80%	
M3	% Customer collection	15%	15%	
N	Truck, Mixer, Pumps			
N1	Total number of truck mixers / delivery vehicles	2000	2000	
N2	% under 6 m ³	87%	87%	
N3	% 6-8 m ³	10%	10%	
N4	% over 8 m ³	3%	3%	
N5	% pumped concrete on total ready-mixed concrete	15%	15%	
N6	Total number of pumps	200	200	

(*) E = Estimated value

Country	United States of America
---------	--------------------------

		Y 2000	Y 2001	Comments (*)
A	Total number of ready-mixed concrete producers			
A1	Country	-	2700	E
A2	Members	-	800	
B	Total number of employees/workers			
B1	Country	-	100000	E
B2	Members	-	60000	E
C	Turnover including transport – (millions of €)			
C1	Country	-	30000	E
C2	Members	-	20000	E
D	Total ready-mixed concrete production (millions of m³)			
D1	Country	-	315	
D2	Members	-	205	
E	Plants			
E1	Total number of plants - Country	-	5000	E
E11	% of static mixing plants	-%	20	% E
E12	% of dry batching plants	-%	80	% E
E2	Total number of plants - Members	-	3000	E
E21	% of static mixing plants	-%	20	% E
E22	% of dry batching plants	-%	80	% E
Data F to I refer to total concrete production in USA				
F	Concrete			
F1	Total production including site-mixed and precast (millions of m ³)	-	420	
F2	% of ready-mixed concrete	-%	75	%
F3	% of site-mixed concrete	-%	10	% E
F4	% of precast concrete	-%	15	% E
G	Cement			
G1	Total cement consumption (millions of tons)	-	113	incl masonry
G2	% to ready-mixed concrete	-%	74	%
G3	% to site-mixed concrete	-%	7	%
G4	% to precast concrete	-%	13	%
G5	% to other uses (mortar, repair, restoration, etc)	-%	6	%
G6	Average Dosage in ready-mixed concrete (kg/m ³)	-	300	
H	Addition			
H1	Most commonly used addition	-	FA - Fly Ash	
H2	Total consumption of addition I (millions of tons)	-	28000	E
H3	Average dosage in ready-mixed concrete (kg/m ³)	-	65	E
On total ready-mixed concrete production:				
I	Type/dimension of specimen for strength tests	-	Cyl 15x30	
J	% per strength class			
	strength (N/mm ²)			
J1	<=15	-%	10	% E
J2	>15 <=25	-%	50	% E
J3	>25 <= 35	-%	30	% E
J4	>35	-%	10	% E
K	Preferred method for measurement of consistence	-	Slump (S)	
L	% per consistence class			
L1	S1	-%	-	%
L2	S2 - S3	-%	-	%
L3	S4 - S5+	-%	-	%
M	Delivery method			
M1	% Company vehicles	-%	94	% E
M2	% Outside contractors	-%	5	% E
M3	% Customer collection	-%	1	% E
N	Truck, Mixer, Pumps			
N1	Total number of truck mixers / delivery vehicles	-	70000	
N2	% under 6 m ³	-%	5	% E
N3	% 6-8 m ³	-%	80	% E
N4	% over 8 m ³	-%	15	% E
N5	% pumped concrete on total ready-mixed concrete	-%	30	% E
N6	Total number of pumps	-	-	

(*) E = Estimated value

ERMCO

EUROPEAN READY MIXED CONCRETE ORGANIZATION
ASSOCIATION EUROPEENNE DU BETON PRET A L'EMPLOI
EUROPÄISCHER TRANSPORTBETONVERBAND

Rue Volta 8
B 1050 Brussels

Tel: + 32 (2) 6455 212
Fax: + 32 (2) 7351467
e-mail: secretariat@ermco.org